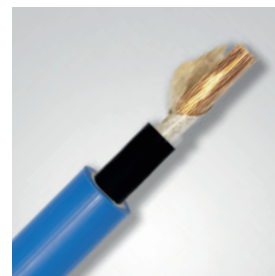
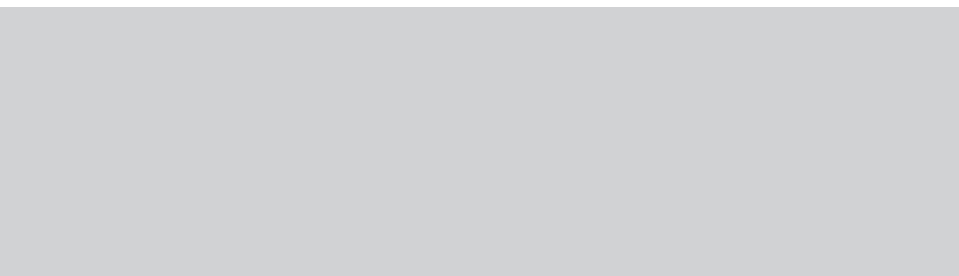


# COMPANY PROFILE



**ALFA TRAFILI s.r.l.**

Made in Italy



## ABOUT US

ICEL starts its electrical cable production business in the first half of the 1950s as a private company and turns into a cooperative in 1978, by means of what today would be called a "workers buyout".

Today ICEL is a modern and well organized company, one of the main players in the electric cable sector in Italy and in Europe. It extends over an area of more than 76,000 square meters and it has over 230 employees with a turnover of over 250 million euros. In addition to the main plant in Lugo (RA), the company also has a further plant in Zingonia (BG), a warehouse in Salerno and another one in Bari.

On 5 November In 2018 ICEL acquired the Alfa Trafli Srl Company in Alfanello (BS), This is one of the leading companies in the Italian market for the

production of copper wire rods from continuous for casting and for the processing production of semi-finished copper and aluminium products, mainly intended for electric cable producers as well as and end-users in the public utilities sector. Alfa Trafli has two plants for a total of 20,000 square meters covered and an annual turnover of over 50 million Euro euros.

Currently, the organization of the ICEL Group responds in a concrete way to the needs of optimizing work processes, achieving high levels of quality in the products and services offered. The experience gained over the years allows for excellent results in terms of performance, meeting the needs of its customers. ICEL's constant commitment to

the research and development of new and more competitive technologies has led to positive results that have continued to grow over time. The reason for the added value of ICEL is to be found in its ability to face the difficulties of the market, identifying the new customer needs, the critical issues of products, machineries and / or plants, to intervene and maximize process efficiency.

From July 2020 ICEL has changed its Statute obtaining the qualification of Benefit Company: the specific aims of common benefit that the Cooperative intends to achieve have been introduced, that is operating in a responsible, sustainable and transparent way towards people, communities, territories and environment, cultural and social

assets and activities, bodies and associations and other stakeholders.

Without ever letting its guard down as far as innovation is concerned, ICEL has enriched itself with unprecedented perspectives, leaving at the center of the Cooperative's philosophy the determination to grow according to a well-defined scheme of values, which favors respect for the work of Members and collaborators and the optimization of production efficiency, paying attention to safety, quality and the environment as integrated elements in all processes and in the organization.



# OUR NUMBERS

**Icel**  
conduttori di energie  
Low voltage cables



STAFF

**222**



TURNOVER

**250**  
Million €



ANNUAL  
PRODUCTION  
CAPACITIES

39.000  
t/year



PRODUCTS

13.000  
Items



TOTAL AREA

76.000 m² of  
covered  
28.000 m²

**ALFA TRAFILI s.r.l.**  
Copper and  
aluminium  
conductors



STAFF

**39**



TURNOVER

**103**  
Million €



ANNUAL  
PRODUCTION  
CAPACITIES

17.000  
t/year



PRODUCTS

600  
Items



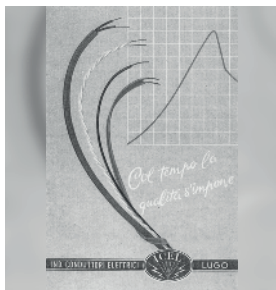
TOTAL AREA

36.000 m² of  
covered  
20.000 m²

# TIMELINE

**1950**

ICEL is founded as a Private Company



**ICEL**

1977

**1978**

ICEL becomes a cooperative



**icelcoop**

1978

**1992**

ACQUISITION of Lombarda Cavi

**1993**

1° ISO:9001 Certification



**Icel**  
conduttori di energie

1988

**2018**

ACQUISITION of Alfa Trafli

**2018**

1° ISO:14001 Certification



**Icel**  
conduttori di energie

2016

**2022**

The GROWTH and DIVERSIFICATION strategy of the ICEL group continues



***From copper casting to the final cable with quality and safety we give value to people and to environmental protection***

## MISSION

Our companies deal with the production of cables for the connection and transport of energy in infrastructures, hospitals, schools, homes, etc ... Our products are certified by qualified laboratories recognized in Italy and Europe.

Our mission is focused on quality, product safety and customer service, known as one of the best on the market, by guaranteeing the best possible working conditions as our main goal, enhancing all potentialities and qualities of our human resources. Environmental protection and preservation and the link with the territory are integral part of the company strategies, which turn into daily actions of improvement through the conscious use of resources in the pro-

duction process and the awareness raising of both the stakeholders and the entire supply chain.

Every day we design and manufacture new cables and conductors through highly-advanced equipments, laboratories, cooperating with specialists and using new sustainable materials, always maintaining our highest quality

## VISION

We aim at being a leading company in the cables and conductors market by focusing on the renewable energy market and sustainable mobility. We believe that our values, such as safety, environment, quality, innovation and people will bring us to be the protagonists of the future, creating a solid and winning network together with our customers and suppliers.



# ICEL IN ITALY

## ALFA TRAFILI srl

- Alfanello (BS) Headquarter, main production unit and warehouse
- Pontevico (BS) Production unit and warehouse

## ICEL

- Headquarter, main production unit and warehouse
- Lugo (RA)

## ICEL

- Zingonia (BG)
- Production unit and warehouse

## ICEL NEW

- Modugno (BA)
- Warehouse

## ICEL

- Salerno (SA)
- Warehouse

Made in Italy

# OUR SECTORS



**PUBLIC AND PRIVATE BUILDING**



**CAR CHARGING**



**TUNNELS, STATIONS**



**SOLAR INSTALLATIONS**



**INDUSTRIES**



**ALARM SYSTEMS**

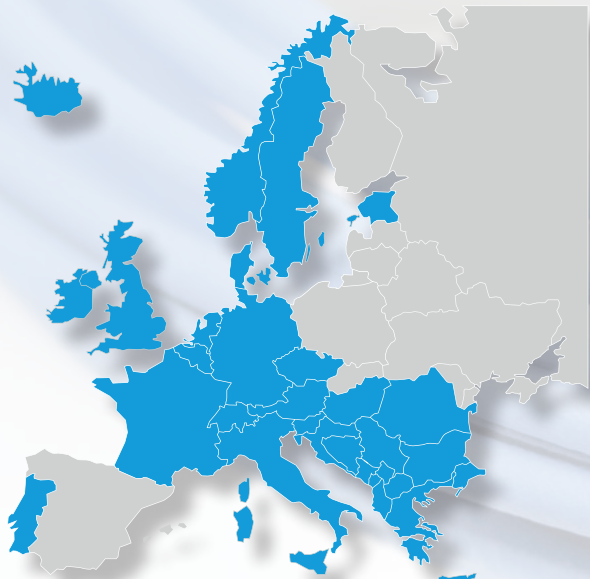




# OUR MARKETS

## EUROPE

Albania  
Austria  
Belgium  
Bulgaria  
Cyprus  
Croatia  
Denmark  
Estonia  
France  
Germany  
Great Britain  
Greece  
Ireland  
Iceland  
Italy  
Luxembourg  
Macedonia  
Malta  
Holland  
Portugal  
Czech Republic  
Romania  
Serbia  
Slovenia  
Sweden  
Swiss  
Hungary



## AFRICA

Algeria  
Libya  
Mozambique  
Senegal  
South Africa



## ASIA

Azerbaijan  
United Arab Emirates  
Jordan  
Hong Kong  
Israel  
Laos  
Lebanon  
Mongolia  
Qatar  
Singapore  
Taiwan





# THE GROWTH CONTINUES

With its medium-term strategic plan, the group intends to mobilize investments for over 15ML in three years, promoting the digital transition, and the product and market diversification.

## DIGITIZATION, AUTOMATION AND DEVELOPMENT

*New ERP software  
Industry 4.0 - interconnection for machine data transmission to the system software.  
Energy efficiency  
Improvement of business processes*

INVESTMENTS  
**4,4**  
million €

## INTERNATIONALIZATION

*New specific plants and specific projects for the customization of cables for the foreign market.*

INVESTMENTS  
**3,2**  
million €

## RESEARCH & DEVELOPMENT

*Completion of the product range for large infrastructures.  
Focus on green products – Use of regenerated materials and cables for sustainable mobility and green energy production*

INVESTMENTS  
**4,6**  
million €

## SAFETY AND BUILDINGS

*Education, Professionalization, risk reduction  
Factory expansion  
Layout optimization*

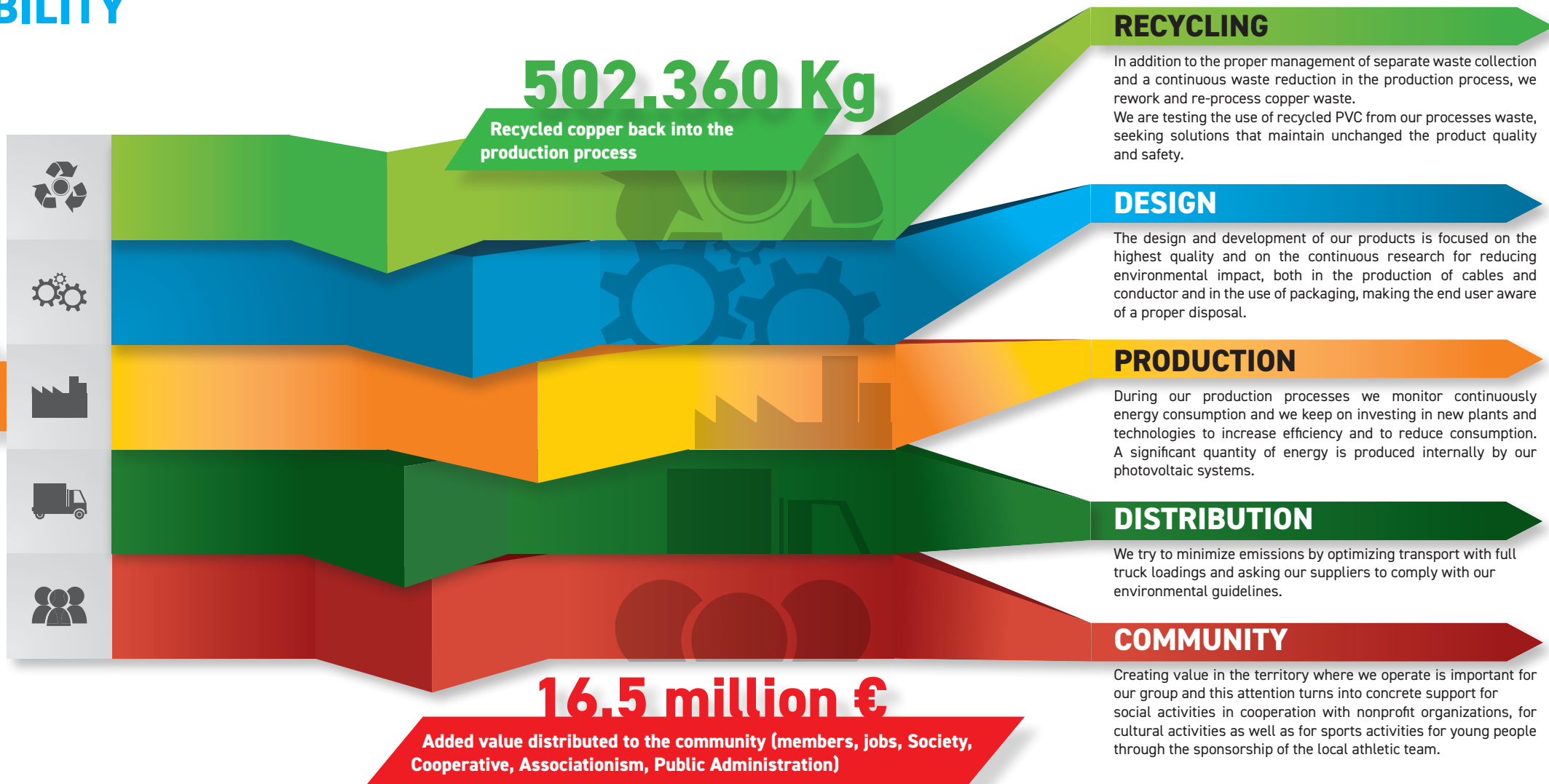
INVESTMENTS  
**2,8**  
million €

# SUSTAINABILITY 2021

516.354 Kwh

Produced from  
photovoltaic systems

In 2021 CO2 emissions  
decreased by 65.17 tons





# CONTACTS



## ICEL

Via Evangelista  
Torricelli, 4/6,  
48022 Lugo (RA)  
T. +39 0545 913111  
[www.icelscpa.it](http://www.icelscpa.it)  
I.C.E.L. S.C.p.A.  
Icel scpa  
@ icelscpa  
[icel@icelscpa.it](mailto:icel@icelscpa.it)

## ALFA TRAFILI

Via Mazzini, 211,  
25020 Alfanello (BS)  
T. +39 030 993 6069  
[www.alfatrafili.it](http://www.alfatrafili.it)  
[info@alfatrafili.it](mailto:info@alfatrafili.it)  
ALFA TRAFILI S.R.L.

